



GROUP EVENTS & WEDDING INFORMATION

540.972.7433 ext. 212

arogers@wpresort.com

Group & Facility Rental Terms

(full rental terms available in contract)

- Standard Rental Times are 9:00 a.m. until 11:00 p.m. Group may choose any available time block.
- Four (4) hour minimum rental requirement for all rental facilities.
- Rental times must be consecutive (cannot split rental hours) and must include set-up and clean-up time. Groups are not permitted to enter the facility to set up earlier than their reservation start time. Please plan to rent additional hours if you anticipate a longer set-up/clean-up time.
- Rentals are subject to availability. Resort events have priority for facility use followed by members and then non-members.
- Rentals are not confirmed until the contract has been signed and applicable deposits have been received.
- Large groups may not occupy the recreation amenities at one time. Group must split up into smaller groups and rotate around the resort's recreation amenities to avoid overcrowding.
- Day-Only Groups do not have access to the resort amenities (e.g. Gym, pool(s), etc.).
 - WPR Members have access to resort amenities anytime with valid WPR ID.
 - Groups staying overnight have access to the resort amenities for the duration of their stay with a Recreation Pass.
- Overnight accommodations are available for group rentals. Requests for Park Model RVs and Log Cabins are subject to seasonal and inventory availability.
 - RVs can be booked as soon as contract and deposit is received for a facility rental (e.g. Pavilion or Clubhouse).
 - Log Cabins are timeshare units first; anything leftover is what is available for paid rentals. Cabins are booked based on standard booking timeframes/restrictions (generally 45 days or less) and limited to 5 cabins maximum.
- All accommodations are subject to availability and may be subject to Peak Season restrictions/black-out periods and minimum-stay requirements.
- Group must designate one (1) person to be the Group Leader and Primary Contact for the group. This person is responsible for signing the Group Contract and responsible for booking the units for the group.
- Groups must book and pay for a Facility Rental (e.g. Pavilion or Clubhouse) and pay all required deposits to be eligible to book RVs further than their standard booking timeframe. If group does not book a Facility Rental, RVs can only be booked 30 days prior to the check-in date.
- Max of 6 people per unit/overnight reservation. No exceptions.
- This list is not exhaustive; full terms and conditions can found in the rental contract.

All terms and prices are subject to change.

ACCOMMODATIONS

Camp Cottages

(formerly Park Model RVs)

Camp Cottages (formerly called Park Model RVs) are pet friendly and great for the family. Within walking distance to playgrounds, pools, activities and both Cool Spring and Hazel Grove Lake, these units are comfortable and located all over the resort. Ideal for those who want to camp, but prefer not to "rough it" outdoors. Perfect for a vacation, without the expenses of long distance travel. Camp Cottages sleep a maximum of six (6) people.



ACCOMMODATIONS

Pavilion & Field Camping

Great for large group campouts including Scouts, church retreats, family reunions and more. This space includes use of the Pavilion and picnic area plus the field for camping and activities. 60 people overnight maximum.



RV SITE or Tent Site

Perfect for camping in your personally-owned RV or pitching a tent in the Wilderness for a weekend with the family or Scouts. Tenting sites feature a 10'x10' elevated wooden platform.



FACILITIES

Mini-Golf Pavilion

- Group Size: 100 people
- Ceiling Lights & fans
- Picnic Tables
- Charcoal Grills
- Gravel Parking Lot
- Four Hour Minimum Rental
- Conveniently located at the front of the resort next to Mini-Golf and the Adventure Park!
- Great birthday party location!



Ridge Road Pavilion

- Group Size: 50 people
- Ceiling Lights
- Picnic Tables
- Charcoal Grills
- Gravel Parking Lot
- Four Hour Minimum Rental



Recreation pavilion

- Group Size: 100 people
- Ceiling Lights/Electric Outlets
- Picnic Tables
- Charcoal Grills
- Gravel Parking Lot
- Four Hour Minimum Rental



FACILITIES



Wilderness clubhouse

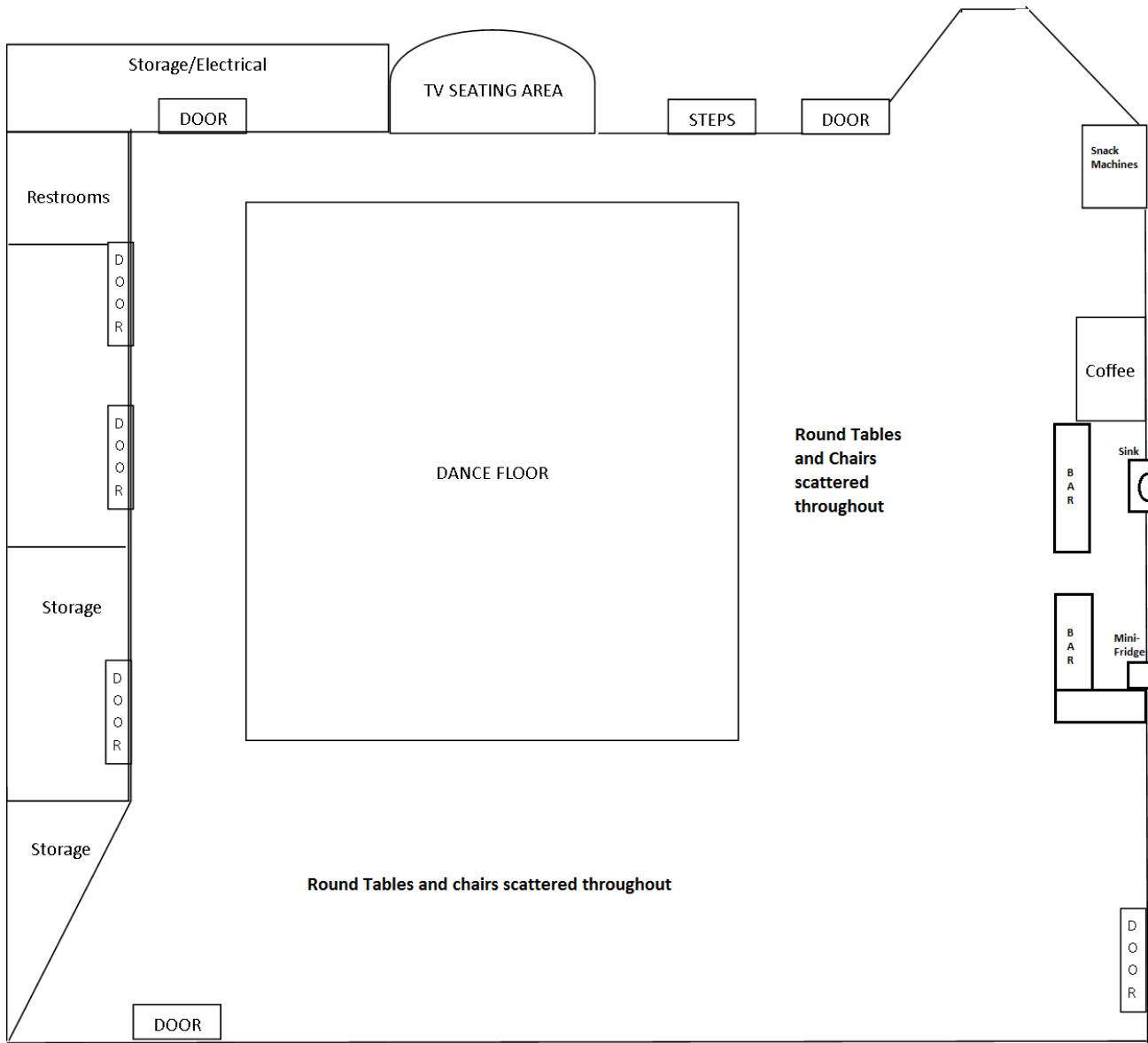
Our rustic, lodge-style Clubhouse offers the perfect area for your rustic wedding ceremony, reception or any other special occasion. Features an ADA accessible entrance and parking, two floors and ideal for up to 100 people.

Perfect for family reunions, weddings, corporate meetings, birthday parties and so much more! Includes approximately 100 chairs, 25 (3ft) round tables and a two-piece bar with rental.

*4-hour minimum rental.
Set-up time and/or
rehearsal is not included
in the rental.*



Facility Amenities



Clubhouse includes 100 chairs, 25 round tables, Ice Machine, Mini-Fridge, Sink, Dance Floor

Ridge Road Pavilion

Picnic Tables

Gravel Parking Area

27C Comfort Station w/
Restrooms

Overhead Lighting

Electric Outlets

50 people max

Recreation Pavilion

Picnic Tables

Gravel Parking Area

Overhead Lighting

Electric Outlets

100 people max

Near Sand Volleyball Court,
Softball Field, Tennis Courts

Mini-Golf Pavilion

Picnic Tables

Ceiling Fans

Gravel Parking Area

Overhead Lighting

Electric Outlets

100 people max

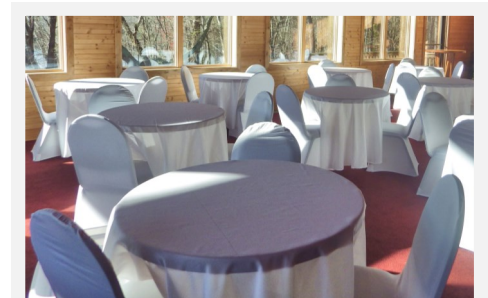
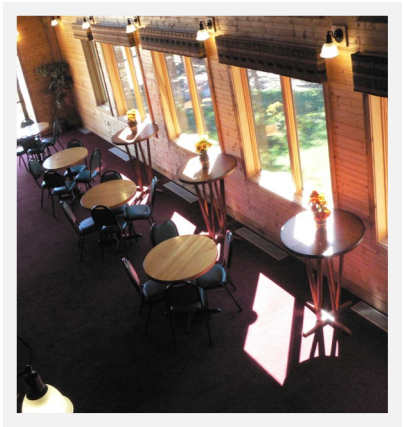
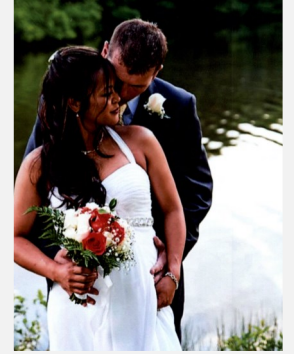
Next to Mini-Golf

All terms and prices are subject to change.

CLUBHOUSE PHOTOS



CLUBHOUSE PHOTOS



RECREATION AMENITIES

Adventure Course

Climbing Wall

Miniature Golf

Disc Golf

Two Lakes

Indoor Pool, Two Outdoor Pools

Hiking Trails

Tennis Courts

Sand Volleyball Court

Softball Field

For rental or pricing information for specific amenities, please contact Amy at 540.972.7433 ext. 212. Not all amenities may be reserved for exclusive use.



LOCAL VENDORS

The Little Wedding House

Tammie Gaines

Officiant / Marriage Commissioner

Wedding Planner

Day of Wedding Coordinator

(540) 834-9145

www.littleweddinghouse.com

Facebook.com/littleweddinghouse

Becca Bee Events

Becca Beasley

Day of Wedding Coordinator

Partial Wedding Planning

Full Service Wedding Coordination

(443) 534-0630

www.beccabeeevents.com

Facebook.com/BeccaBeeEvents

L'Amore Wedding & Event Planners

Janae Lepire

Day of Wedding Coordinator

Partial Wedding Planning

Full Service Wedding Coordination

(540) 602-9134

www.lamoreplanners.com

Facebook.com/lamoreweddingplanners

YouSee Photography

Susi Darr

Wedding Photographer

Misc. Event Photographer

(540) 548-2495

Mobile: (540) 429-5712

Email: youseephoto@gmail.com

www.youseephoto.com

Facebook.com/YouSeePhotography

DJ Gerry Bradshaw

Gerry Bradshaw

Event DJ—"Epic Events Everytime!"

(540) 891-1728

Mobile: (540) 842-1728

Email: djgerry@djgerry.com

DJGERRY.COM

Memorable Moments

Event Rentals

Linens, Archways, Decorations

(540) 548-3486

(540) 898-8884

dacanty@msn.com

mmphotodjsax.com

Wilderness Presidential Resort Facility Rate Sheet

Facility	Maximum Occupancy	Member Rate	Non-Member Rate
Ridge Road Pavilion*	50 people	\$20.00 per hour	\$30.00 per hour
Recreation Pavilion*	100 people	\$30.00 per hour	\$40.00 per hour
Mini-Golf Pavilion*	100 people	\$40.00 per hour	\$50.00 per hour
Clubhouse*	150 people max (100 seated)	\$60.00 per hour	\$150.00 per hour
WAC Event Room**	30 people max (30 seated)	\$25.00 per hour	\$30.00 per hour
Ridge Road Pavilion + Field Camping	60 people	\$125.00 per night	\$250.00 per night
Bonfire Pit	25 people	\$50.00 for 2 hours includes wood	\$50.00 for 2 hours includes wood
Gazebo <i>(must also rent Clubhouse)</i>	30 people (seating not provided)	\$25.00 per hour	\$35.00 per hour

Pavilion Amenities:

- Picnic table seating
- Overhead lighting & Electric outlets
- Gravel parking area
- Charcoal grills
- Ceiling Fans (Mini-Golf Pavilion only)

Clubhouse Amenities:

- 25 round wooden tables (3ft diameter)
- Approximately 100 padded chairs (75 on floor, 25 in storage)
- Dance Floor, Two-piece bar
- *No kitchen facility available at this time.*

- *No decorations or linens are provided*
- 6ft rectangular banquet tables are available to rent: \$8.00 each

WAC Event Room Amenities:

- 6 six-foot banquet tables
- 30 folding chairs
- Electric

Group Recreation Amenities

Amenity	Member Rate	Group rates valid for 10 or more participants, must make advanced reservations to qualify. Subject to seasonal availability.
Mini-Golf	\$1.00 per person (member) / \$2.00 per person (non-member)	
Adventure Course 1 Lap	\$8.00 per person	
Adventure Course 2 Laps	\$12.00 per person	
Adventure Course 1 Lap + 1 Climb	\$12.00 per person	
Adventure Course 2 Laps + 2 Climbs	\$16.00 per person	
2 Climbs	\$4.00 per person	

All prices and information are subject to change.



Amy Rogers | Director of Business Development and Groups | (540) 972-7433 ext. 212 |
arogers@wpresort.com Fax: (540) 972-3506 | 9220 Plank Rd, Spotsylvania Va. 22553

SAVE TIME AND SUBMIT A GROUP REQUEST ONLINE AT <https://www.wpresort.com/group-request/>

Fill out the form completely to include name, account # (if applicable), dates, desired rentals and include any special notes in the description. Every effort will be made to respond to your request via email within 72 hours.

Group Request Form

Today's Date: _____

Name

Account #

Street address

City

State

ZIP Code

Primary phone number

Cell phone number

E-mail address

Requested Reservation Dates: _____

- ☐ Clubhouse rental / Time: _____ ☐ Bonfire Rental / Time: _____ ☐ Cabin rental / # of units: _____
☐ Pavilion rental / Time: _____ ☐ Blank Lot rental / # of sites: _____ ☐ RV rental / # of units: _____
☐ Field Campsite ☐ Other, please specify: _____

Group Amenity Requests

- ☐ Adventure Course / # of participants and time: _____
☐ Miniature Golf ☐ Other, please specify: _____

Please describe the nature of your event, how many rental units and type are requested and/or if a rental facility is requested. This will better help us to serve your group!

All functions must comply fully with Virginia ABC laws. It is your responsibility to obtain any necessary licenses including one-day Banquet Licenses through the Virginia Department of Alcoholic Beverage Control. Please allow thirty (30) days for this application process. See www.abc.virginia.gov/licensing.html for further details or call (804) 213-4400. All facility rentals that will have alcoholic beverages present must supply an ABC license.

Please complete this form and return to Amy Rogers in the Reservations Building or email to arogers@wpresort.com or fax to (540) 972-3506. Every effort will be made to respond to each request within 72 hours with pricing and additional information. *This request form does not guarantee a reservation of any kind. All requests are subject to standard booking timeframes and availability as well as a deposit.*

Warning: Under Virginia Law, there is no liability for an injury to or death of a participant in a project activity conducted at this location if such injury or death results from inherent risk of the project activity. Inherent risks of project activities include, among others, risks of injury inherent to land, equipment and animals, as well as the potential for you to act in a negligent manner that may contribute to your injury or death. You are assuming the risk of participating in this project activity.

Signature _____

Date _____